

Instruction EA ALGORITHMIC v1.0

TABLE OF CONTENTS

| | Pp. |
|--|----------|
| BRIEF DESCRIPTION OF THE SYSTEM | - 1 |
| STARTING THE EA | - 1 |
| SETTING FOR TRADE | - 2, 3 |
| DESCRIPTION OF THE MANUAL OF TRADE | - 4 |
| AUTO TRADE REGIME | - 5 |
| DIFFERENCE OPENING LIGAMENTS OVER TIME OR CLOSE ALL TRANSACTIONS | - 6, 7 |
| APPLICATION STOPLOSS | - 8 - 10 |
| CONCLUSION | - 11, 12 |

Definitions that are further used in the text:

The transaction - order, position

Bundle - counter transactions, hedging or lock

Torn ligament - close one (1) of the counter transactions

Averaging - to make a deal in the same direction as the opening of the transaction.

Range - as in the item price can go for a day

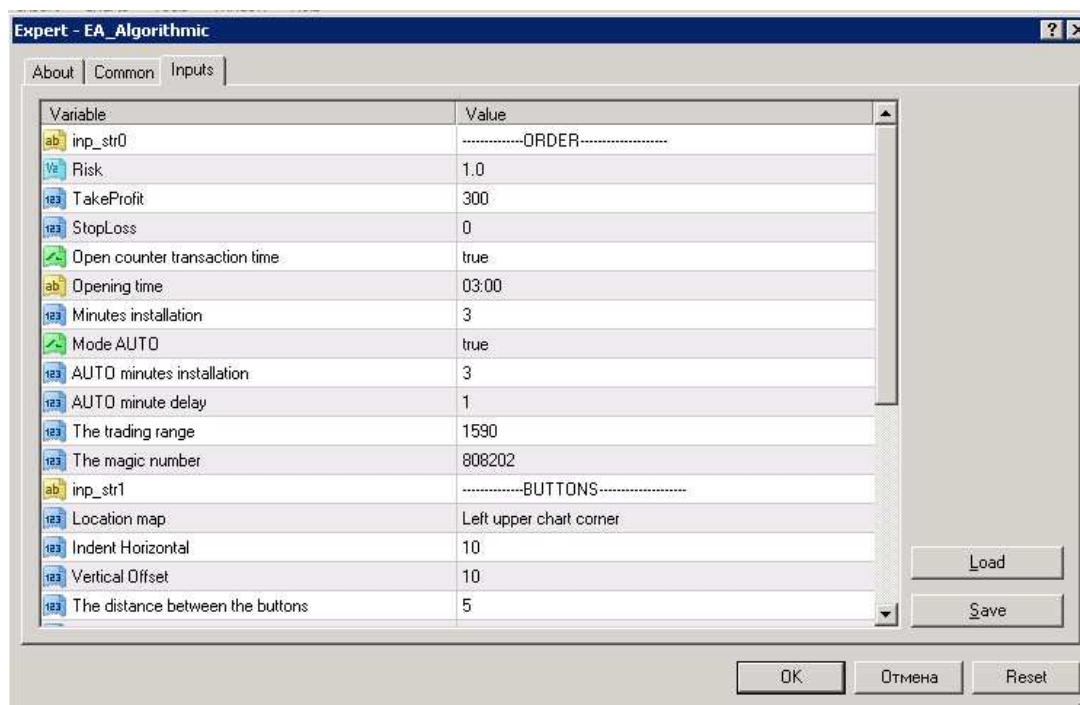
BRIEF DESCRIPTION OF THE SYSTEM

EA uses some regularity cross pairs, namely, that they are always after a strong movement to make a move in the opposite direction.

Immediately after the start, or time settings, the adviser opens a bunch. Then the adviser determines the range based on the built-in algorithm and when it breaks a bunch of achieving and making the averaging and sets TP and SL if he does not go around. Upon reaching the TP or by pressing the buttons CLOSE ALL closes all transactions, including those not their own. The cycle is repeated. Number of transactions (ligaments) per month 5 - 18.

STARTING THE EA

Install EA to the chart EURJPY M15.



SETTING FOR TRADE

| | |
|-------------------------------|---|
| Risk | - Risk management, in% of the deposit |
| TakeProfit | - TakeProfit = 150 - 300 points |
| StopLoss | - StopLoss = 0, the following is written on the application details |
| Open counter transaction time | - Enable / disable the opening time ligaments, if true, after the closing of all transactions on the account, the next bunch will open at a predetermined value - Opening time. If false, the bunch will open immediately after the closing of all transactions. This switch is used in the strategy tester for testing the proper EAR. |
| Opening time | - Opening Hours ligament |
| Minutes installation | - Time in minutes for the installation bundles for which the adviser opens a deal at the best price |
| Mode AUTO | - Enable / disable the AUTO mode |
| AUTO minutes installation | - Time in minutes for the installation to AUTO mode, during which the adviser opens a deal at the best price |
| AUTO minute delay | - Delay in minutes = 1 - 30 of averaging the opening after the condition - The trading range |
| The trading range | - The trading range = 500 - 1600 |
| The magic number | - The magic number |

The values specified in paragraphs, to work with the five-digit quotes, to work with the four-digit quotes should be removed 0.

Setting text and trade buttons on the screen do not affect them, we will not touch.



The text on the screen

Lot - Set% of the deposit

TP - TakeProfit

AUTO 553 >= 1590 (16:12 - 16:15 - AUTO mode, the current range and the range of the value in the settings and time, followed by 3 buttons:



The top button when pushed on it the inscription **OPEN** will mean that bunch will be opened immediately after the closing of all transactions.



When the top button is not far and the inscription on her **time: No corr time** - this means that a bunch of open time and opening time has already passed.

If the button is timing - is the remaining time before the opening of the bunch. Bundle open at this point in the account of any transaction, otherwise that does not happen.



The middle button **ADD**

Pressing the button closes the profitable trade, and averaging open transaction, and then set TP, SL.

Lower button **CLOSE ALL**.

Pressing the button will close all transactions in the account.

DESCRIPTION OF THE MANUAL OF TRADE

Options example

| | | |
|-------------------------------|----------|---|
| Risk | = 1; | |
| TakeProfit | = 150; | |
| StopLoss | = 0; | below is written on the application details |
| Open counter transaction time | = false; | a bunch of open immediately after the closing of all transactions. |
| Opening time | = 05:00 | |
| Minutes installation | = 3; | Time in minutes for the installation bundles for which the adviser opens a deal |
| Mode AUTO | = false; | |

Run EA.

EA should open a bunch, if this has not happened, then click the top button should appear **OPEN** button will remain depressed and the inscription. After that time, not one of the transactions in a bundle goes to profit and if it will be sufficient for the trader's opinion, then click on the **ADD** button. Closes profitable trade, and two of the same (average) will open. On all transactions be set TP and SL. Averaging we compensate losses from the losing trades. It is allowed in addition to open the transaction and to change the TP and SL. This strategy uses a feature of the behavior of the currency pair, which is not reaching the daily values of a couple doing a rollback and a pullback is more likely to work TP. But you can always close the transaction by pressing all the buttons **CLOSE ALL**. Then again open a bunch of keys or by squeezing the top, we'll move, the opening time and a bunch of ligaments opens at 05:00. To trade in the manual mode, it is desirable, but not necessary to use I Permanent light.

In the experience of observing the currency pair work in manual mode, a lucrative job on full automatic.

This system is conservative and allows a profit of 50% per annum with a minimum risk of 2%.

For manual operation developed a very simple trading strategy, all interested in personal correspondence to tell in detail.

AUTOMATIC TRADE REGIME.

In the settings you set the AUTO mode

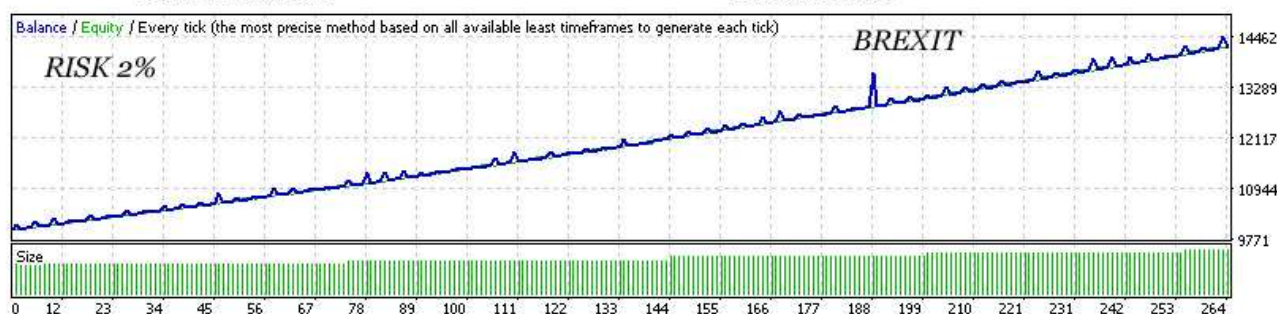
| | | |
|-------------------------------|----------|--|
| Risk | = 1; | |
| TakeProfit | = 200; | |
| StopLoss | = 0; | below is written in detail on the application of SL |
| Open counter transaction time | = false; | a bunch of open immediately after the closing of all transactions. |
| Opening time | - 05:00 | |
| Minutes installation | = 3; | Time in minutes for the installation bundles for which the EA opens a deal |
| Mode AUTO | = true; | |
| AUTO minutes installation | = 3; | Time in minutes for the installation to AUTO mode, during which the EA opens a deal |
| AUTO minute delay | = 1; | Delay in minutes = 1 - 30 of averaging the opening after the condition - The trading range |
| The trading range | = 1400 | |

Performs all the steps above for the manual trading, but do not need to press the buttons, you only need to choose the trading range and will be opened as a bundle over time or the closing of all transactions.

DIFFERENCE OPENING LIGAMENTS OVER TIME OR CLOSE ALL TRANSACTIONS

The following are the tests of these modes. Opening time ligament.

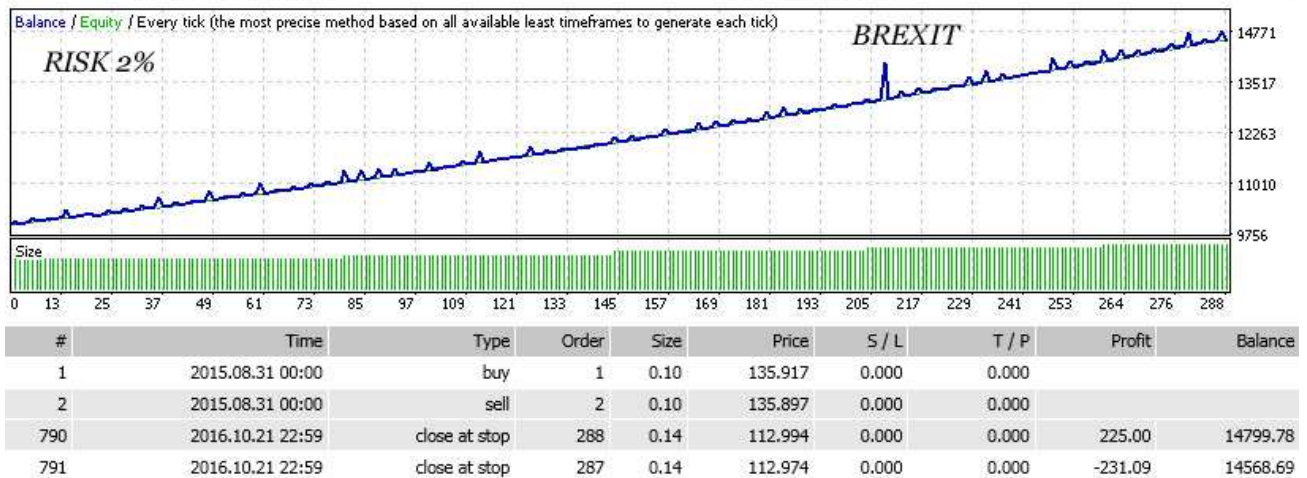
| | | | | |
|--------------------------|---|--|-----------------|--|
| Symbol | EURJPY (Euro vs Japanese Yen) | | | |
| Period | 1 Minute (M1) 2015.08.02 21:00 - 2016.10.21 20:59 (2015.08.31 - 2016.10.23) | | | |
| Model | Every tick (the most precise method based on all available least timeframes) | | | |
| Parameters | inp_str0="-----Опрепа-----"; inp_ord_lot_risk=2; inp_ord_tp=200; inp_ord_sl=0; inp_add_time_loc=true; inp_add_time="03:00"; inp_add_min_set=3; inp_auto=true; inp_auto_min_set=3; inp_auto_min_delay=1; inp_day_range=1370; inp_magic=123; inp_str1="-----Кхонкх-----"; inp_butt_dist_x=10; inp_butt_dist_y=10; inp_butt_dist_y_add=5; inp_butt_size_font=15; inp_butt_size_x=200; inp_butt_size_y=30; inp_butt_clr_open=LightGray; inp_butt_clr_loc=LightGray; inp_butt_clr_close=LightGray; inp_butt_clr_text=Navy; inp_str2="-----Надниси-----"; inp_label_size_font=12; inp_label_size_y=15; inp_label_dist_y_add=5; inp_label_clr_text=WhiteSmoke; | | | |
| Bars in test | 458266 | Ticks modelled | 58409885 | Modelling quality n/a |
| Mismatched charts errors | 0 | | | |
| Initial deposit | 10000.00 | Spread | Current (20) | |
| Total net profit | 4205.72 | Gross profit | 11778.63 | Gross loss -7572.91 |
| Profit factor | 1.56 | Expected payoff | 15.93 | |
| Absolute drawdown | 454.96 | Maximal drawdown | 1100.75 (9.12%) | Relative drawdown 9.47% (1049.84) |
| Total trades | 264 | Short positions (won %) | 116 (79.31%) | Long positions (won %) 148 (72.30%) |
| | | Profit trades (% of total) | 199 (75.38%) | Loss trades (% of total) 65 (24.62%) |
| | | Largest profit trade | 782.50 | loss trade -762.18 |
| | | Average profit trade | 59.19 | loss trade -116.51 |
| | | Maximum consecutive wins (profit in money) | 9 (283.09) | consecutive losses (loss in money) 1 (-762.18) |
| | | Maximal consecutive profit (count of wins) | 828.58 (3) | consecutive loss (count of losses) -762.18 (1) |
| | | Average consecutive wins | 3 | consecutive losses 1 |



| # | Time | Type | Order | Size | Price | S / L | T / P | Profit | Balance |
|-----|------------------|---------------|-------|------|---------|-------|-------|---------|----------|
| 1 | 2015.08.31 03:00 | buy | 1 | 0.10 | 136.014 | 0.000 | 0.000 | | |
| 2 | 2015.08.31 03:00 | sell | 2 | 0.10 | 135.994 | 0.000 | 0.000 | | |
| 725 | 2016.10.21 22:59 | close at stop | 264 | 0.14 | 112.994 | 0.000 | 0.000 | 277.03 | 14488.73 |
| 726 | 2016.10.21 22:59 | close at stop | 263 | 0.14 | 112.974 | 0.000 | 0.000 | -283.01 | 14205.72 |

Opening chords immediately after the closing of all transactions on the account.

| | | | | |
|--------------------------|--|--|-----------------|--|
| Symbol | EURJPY (Euro vs Japanese Yen) | | | |
| Period | 1 Minute (M1) 2015.08.02 21:00 - 2016.10.21 20:59 (2015.08.31 - 2016.10.23) | | | |
| Model | Every tick (the most precise method based on all available least timeframes) | | | |
| Parameters | inp_str0="-----Ордепа-----"; inp_ord_lot_risk=2; inp_ord_tp=200; inp_ord_sl=0; inp_add_time_loc=false; inp_add_time="03:00"; inp_add_min_set=3; inp_auto=true; inp_auto_min_set=3; inp_auto_min_delay=1; inp_day_range=1370; inp_magic=123; inp_str1="-----Кхонки-----"; inp_buttdist_x=10; inp_buttdist_y=10; inp_buttdist_y_add=5; inp_buttdist_size=15; inp_buttdist_size_x=200; inp_buttdist_size_y=30; inp_buttdist_clr_open=LightGray; inp_buttdist_clr_close=LightGray; inp_buttdist_clr_text=Navy; inp_str2="-----Надписи-----"; inp_label_size_font=12; inp_label_size_y=15; inp_label_dist_y_add=5; inp_label_clr_text=WhiteSmoke; | | | |
| Bars in test | 458266 | Ticks modelled | 58409885 | Modelling quality n/a |
| Mismatched charts errors | 0 | | | |
| Initial deposit | 10000.00 | Spread | Current (20) | |
| Total net profit | 4568.69 | Gross profit | 13259.55 | Gross loss -8690.86 |
| Profit factor | 1.53 | Expected payoff | 15.86 | |
| Absolute drawdown | 454.96 | Maximal drawdown | 1065.96 (8.15%) | Relative drawdown 9.50% (1049.84) |
| Total trades | 288 | Short positions (won %) | 130 (79.23%) | Long positions (won %) 158 (73.42%) |
| | | Profit trades (% of total) | 219 (76.04%) | Loss trades (% of total) 69 (23.96%) |
| | | Largest profit trade | 906.55 | loss trade -884.50 |
| | | Average profit trade | 60.55 | loss trade -125.95 |
| | | Maximum consecutive wins (profit in money) | 7 (288.03) | consecutive losses (loss in money) 1 (-884.50) |
| | | Maximal consecutive profit (count of wins) | 956.46 (3) | consecutive loss (count of losses) -884.50 (1) |
| | | Average consecutive wins | 3 | consecutive losses 1 |



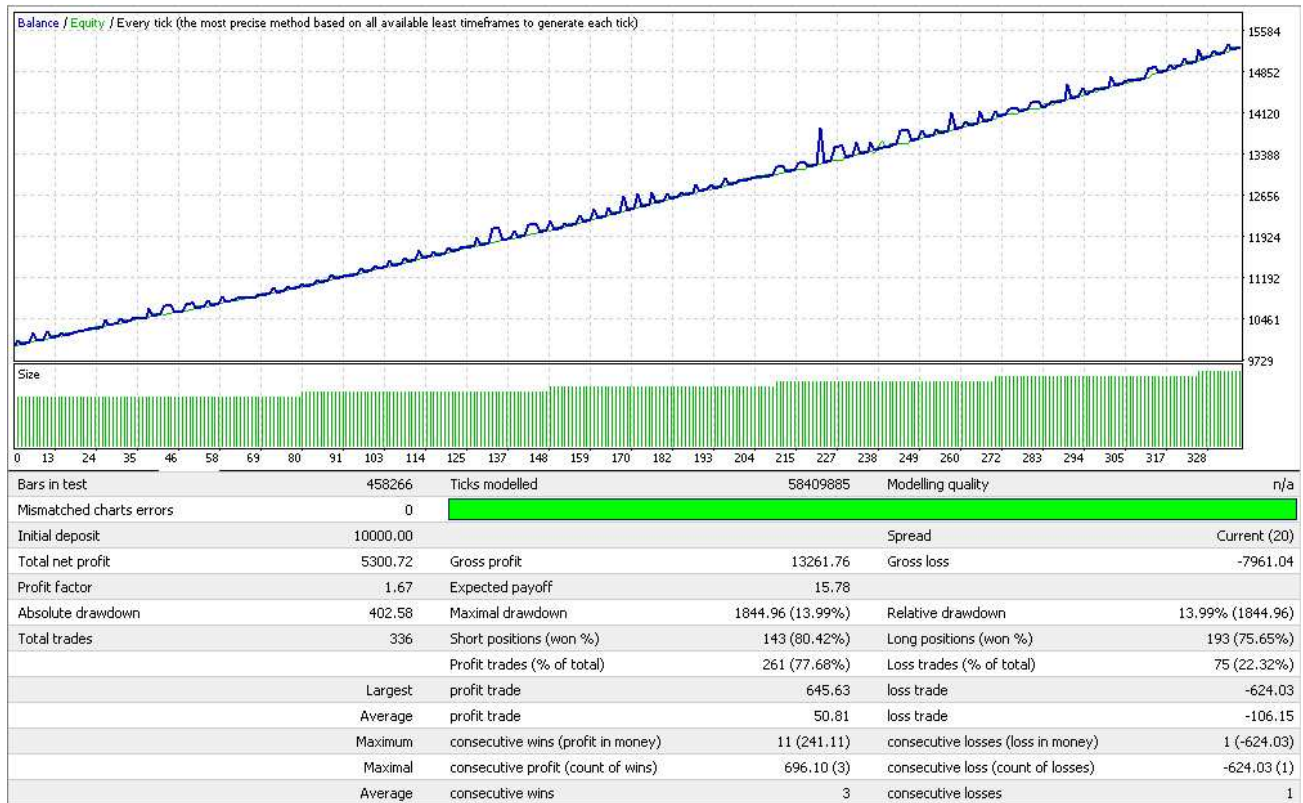
As we can see from the tests and the difference is on the trader's discretion, be always in the market, or at least not for a long time interrupted.

APPLICATION StopLoss

Apply StopLoss or not is an interesting question, and depends on many factors, so many, and it is the type of strategy the traded pair, news, MMS and so on.

Let's look at our strategy the test without StopLoss

Risk = 2;
TakeProfit = 200;
StopLoss = 0;



If you look closely the results of testing on historical data with quality of 99.90%, we can see that there is always a drawdown, as this part of the system. drawdown rate can reach 20% of the deposit, depending on market developments.

The following are examples of trade with SL = 2000 commentary on the event.

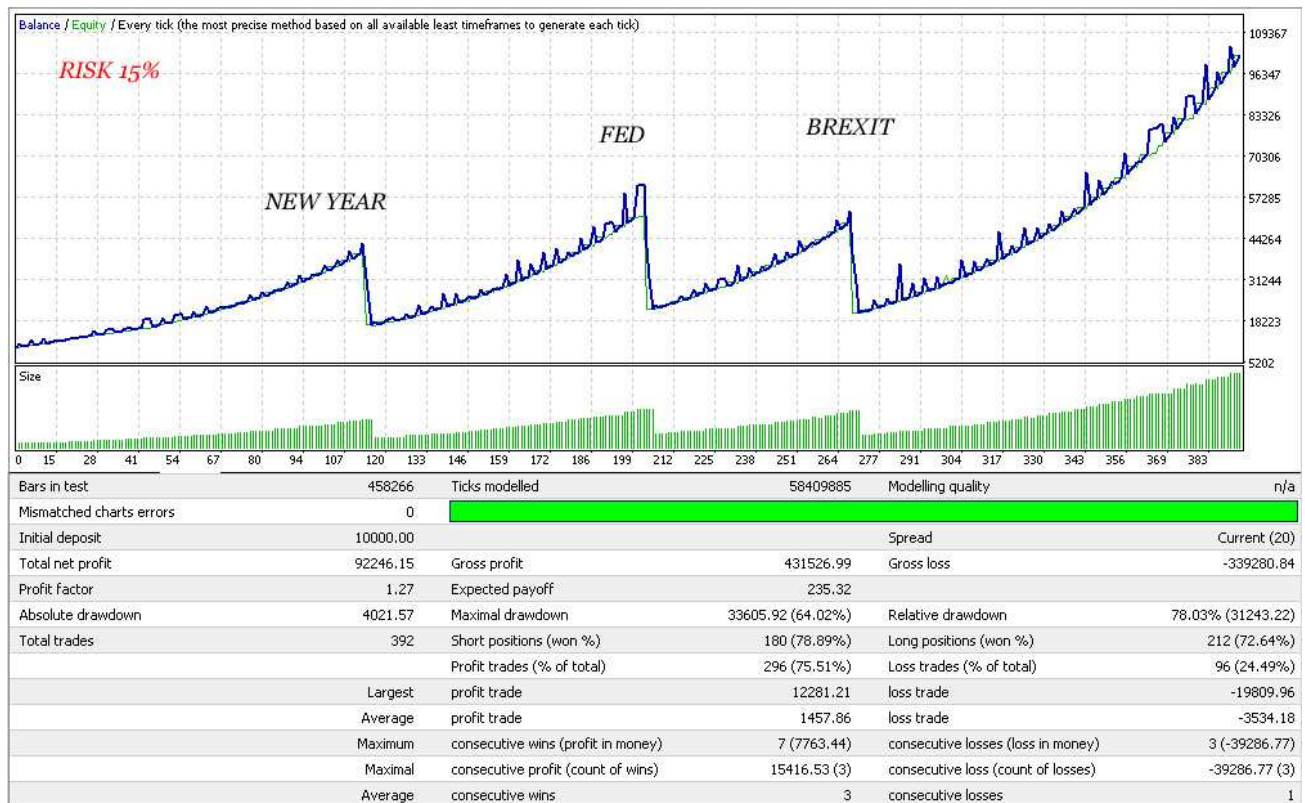


As you can see, if you observe MM and not risk, it is possible to avoid excessive drawdown, with a profit. Even with StopLoss adviser to a profit.

The peculiarity of the traded pair in the fact that after a strong movement she returns to previous levels after a certain time or days. This will use for profit and with sufficient deposit drawdown can safely wait.

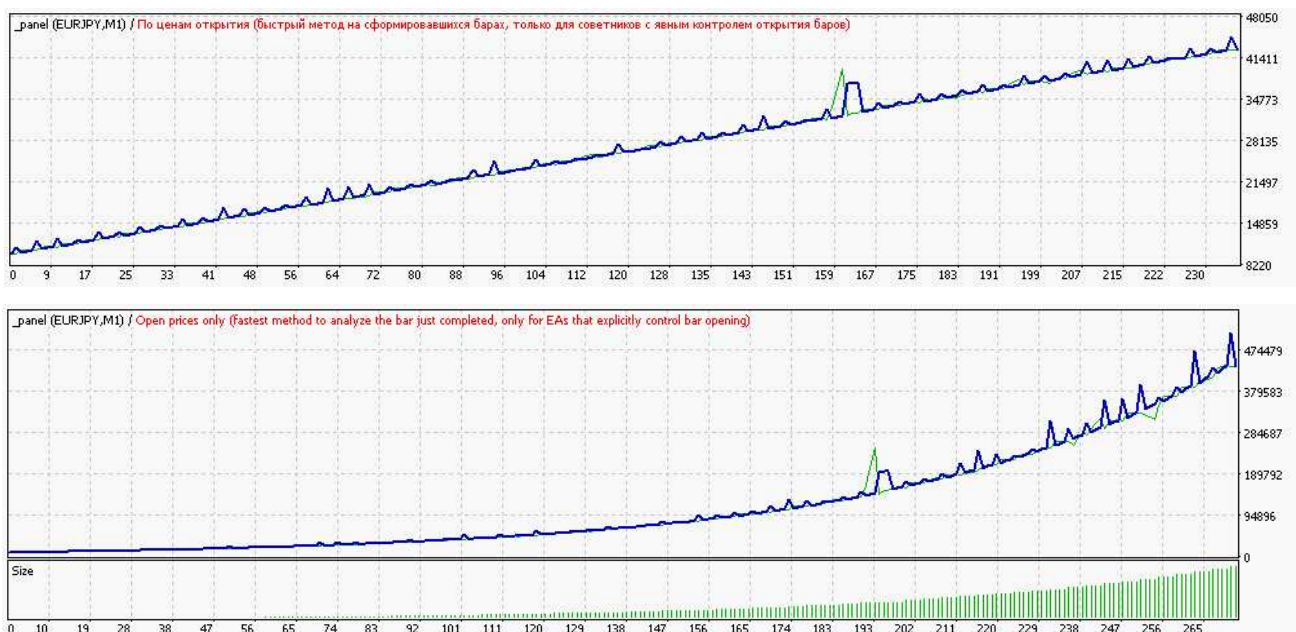
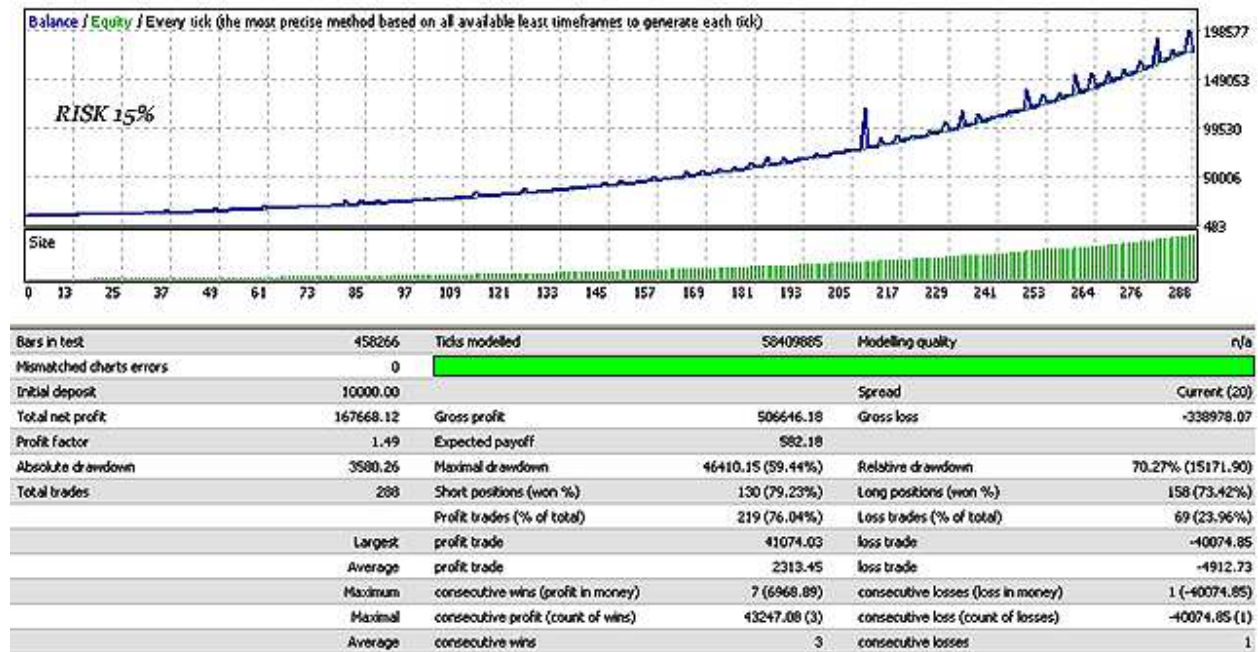
Announcements of events in which the load or perhaps work StopLoss known in advance, is the NFP, and the meeting of FED, ECB, BOJ and FOMS protocols, you can disable trading these days to trade or in manual mode, to avoid a possible drawdown. In manual trading StopLoss can be placed, if necessary, although you can always click on the **CLOSE ALL** button

At the moment we are testing a new version of the EA and the tests are presented below with SL = 2000 and an increased risk and with minimal risk.



CONCLUSION

On the question of greed and how much you can earn if you increase the risk?



For the tests used tick data from tickstory dukascopy on 2016.11.12 to 2015.01.07. EA is not optimized, all the values were obtained in the study of the behavior history of a given pair. Data were collected and processed by hand. The test with the same settings for each individual month shows more accurate data on the profit and loss than just a run for the entire period. Dough excluded Christmas and New Year holidays. Profit / loss was recorded at the end of the month. These factors contributed to improved performance by 2 times and more accurately reflect the real trade.

Those who read to the end and became interested, give a discount on the EA, please.
Good luck to all at a profit.